



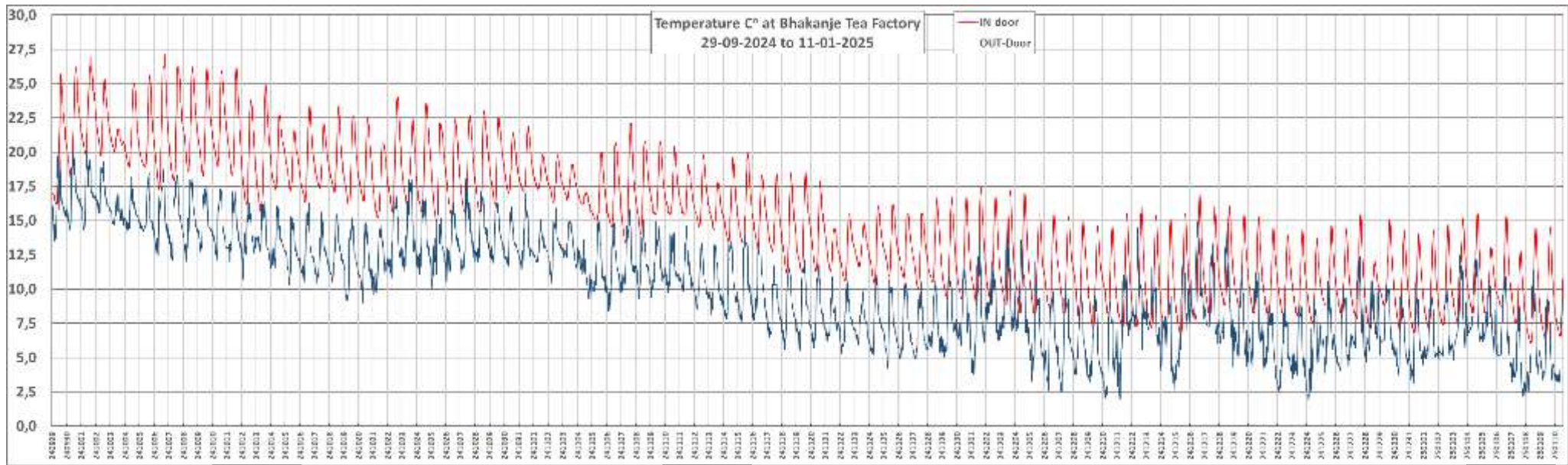
Weatherdata from Bhakanje Tea Factory at 2.350 m altitude

29. September 2024 to 10. January 2025

Data collected from PCE FWS 20 N Weatherstation



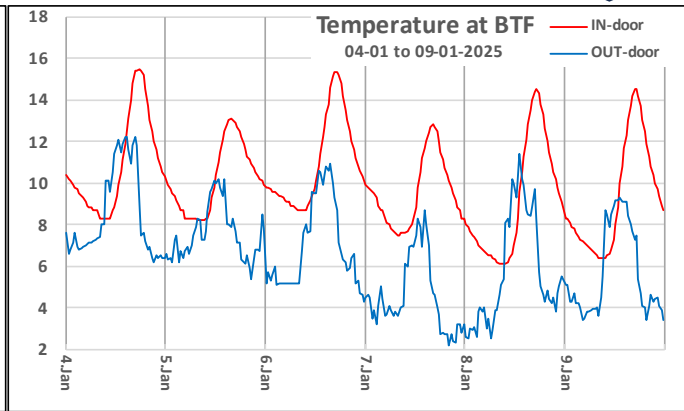
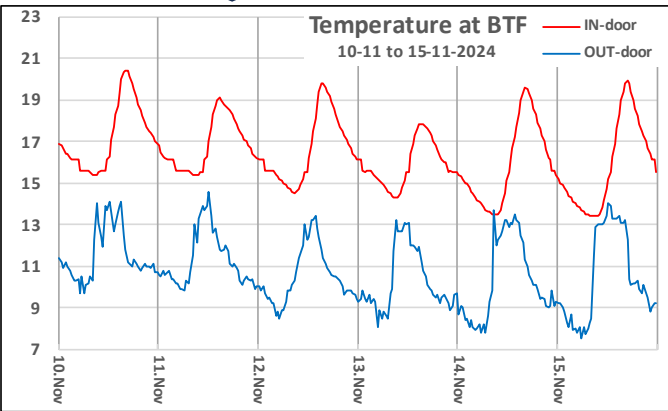
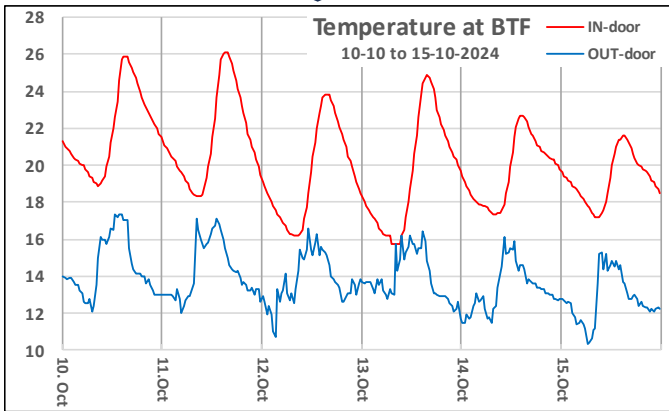
Temperature in C° at Bhakanje Tea Factory – 29. september 2024 to 10. January 2025



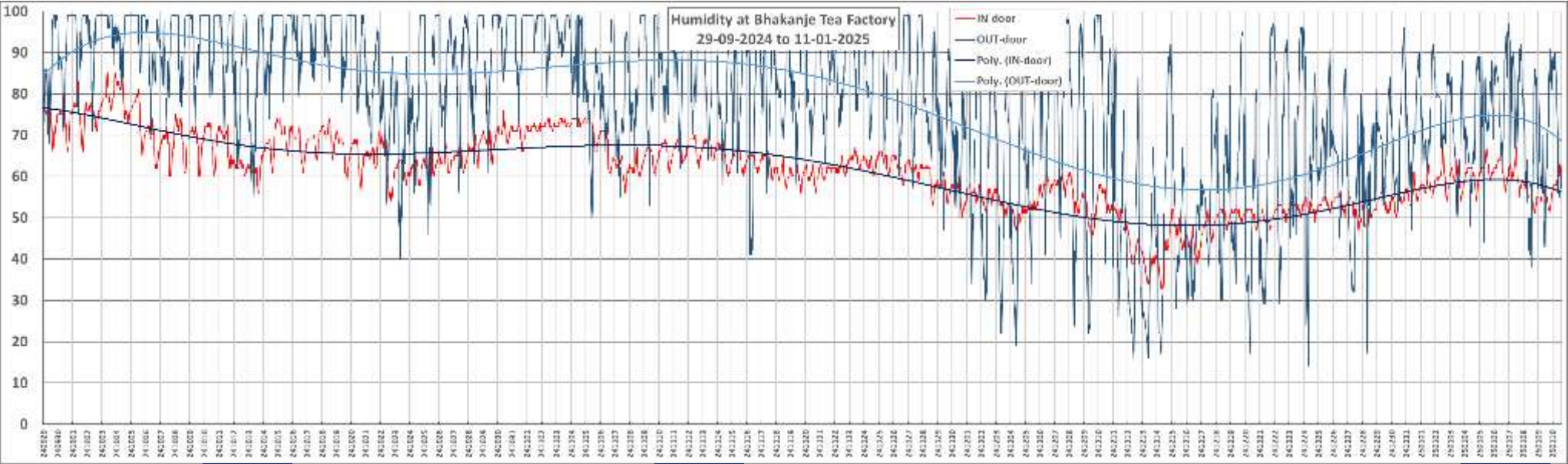
Detail

Detail

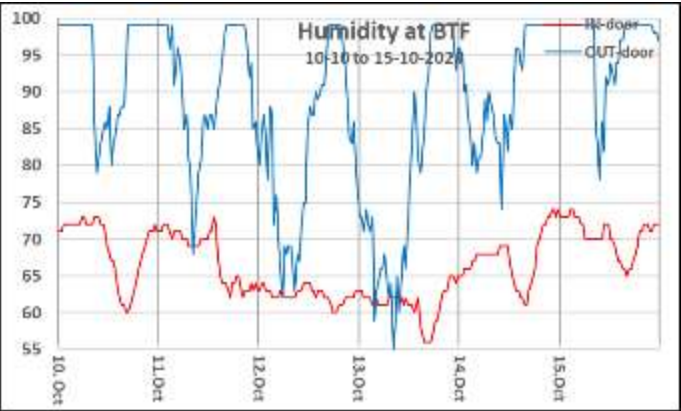
Detail



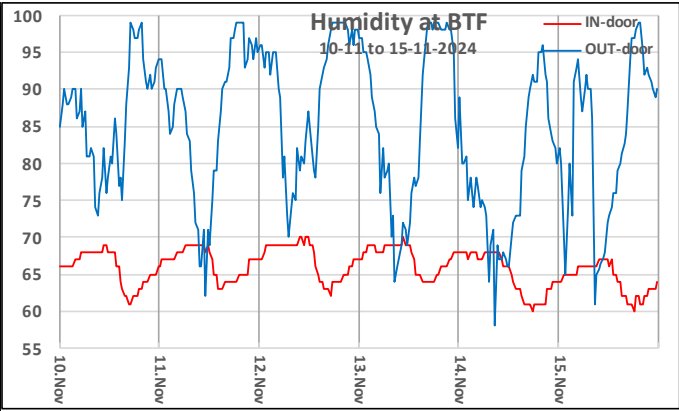
Humidity % at Bhakanje Tea Factory – 29. september 2024 to 10. January 2025



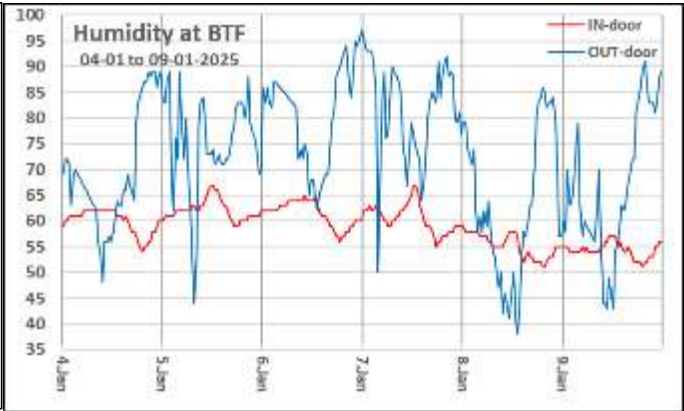
Detail



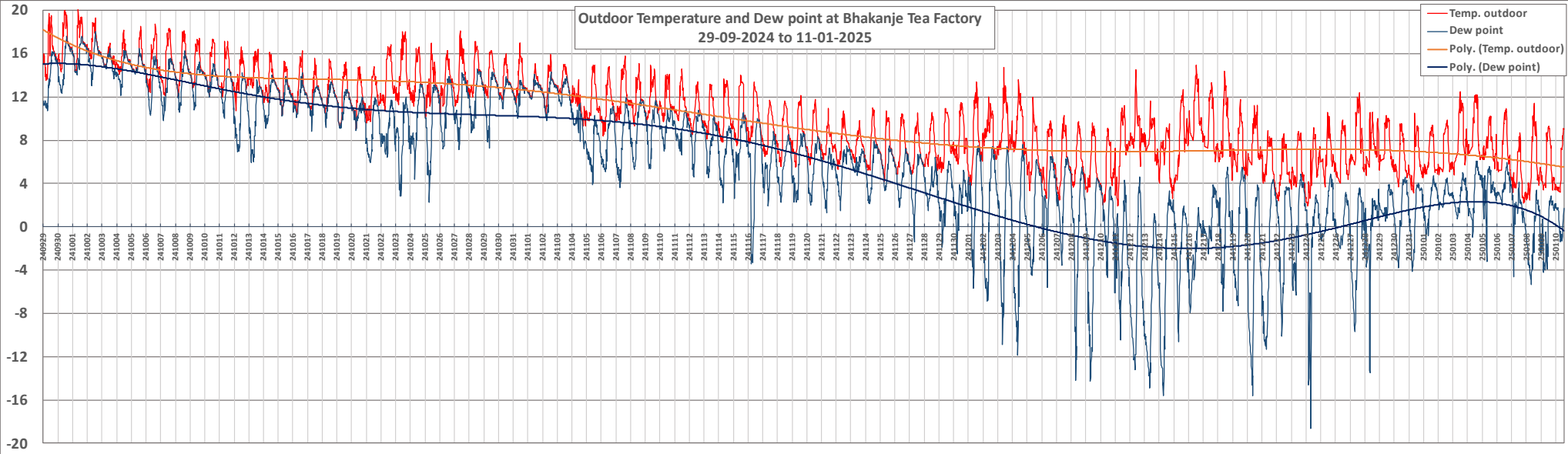
Detail



Detail



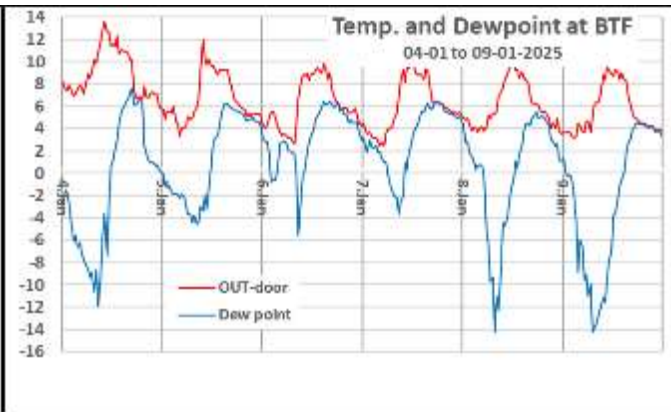
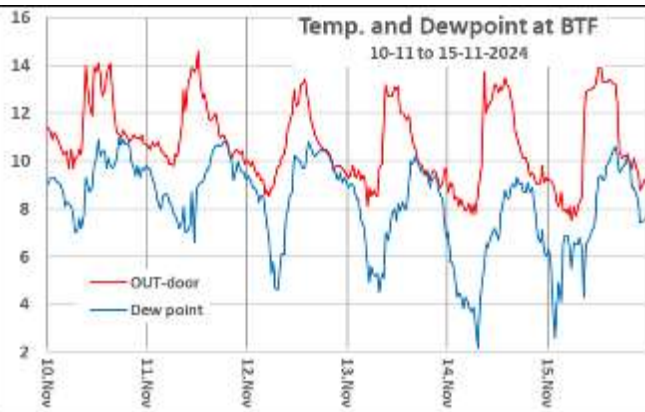
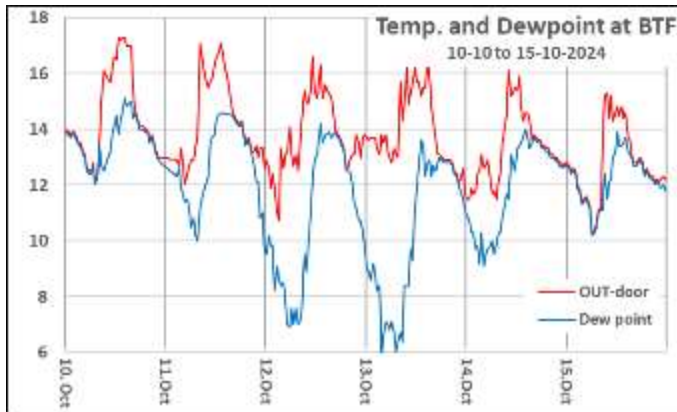
Temperature and Dew Point at Bhakanje Tea Factory – 29. september 2024 to 10. January 2025



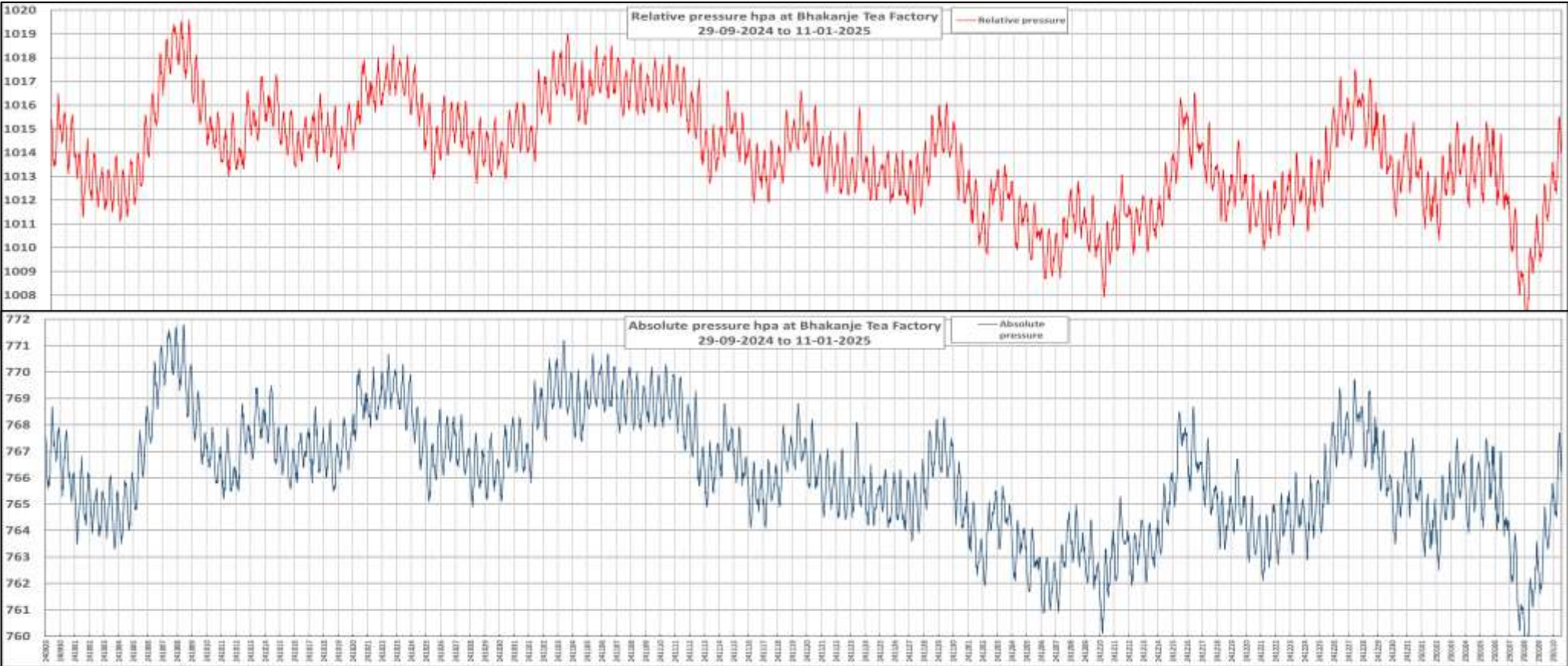
Detail

Detail

Detail



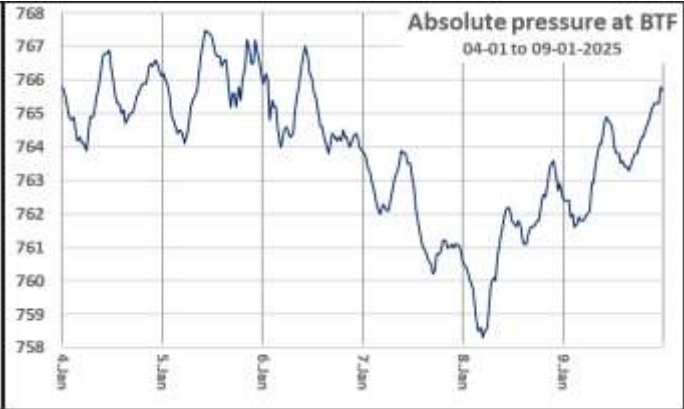
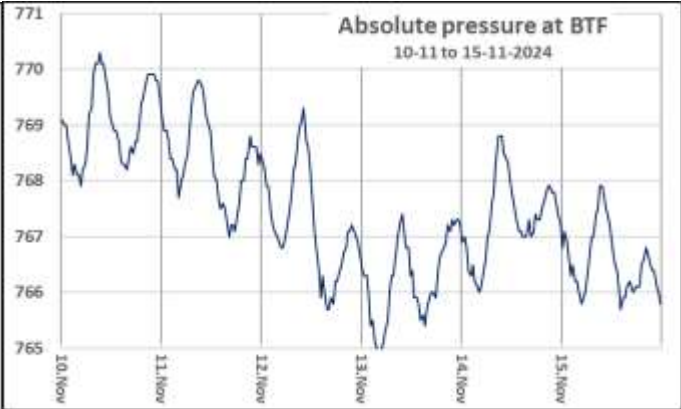
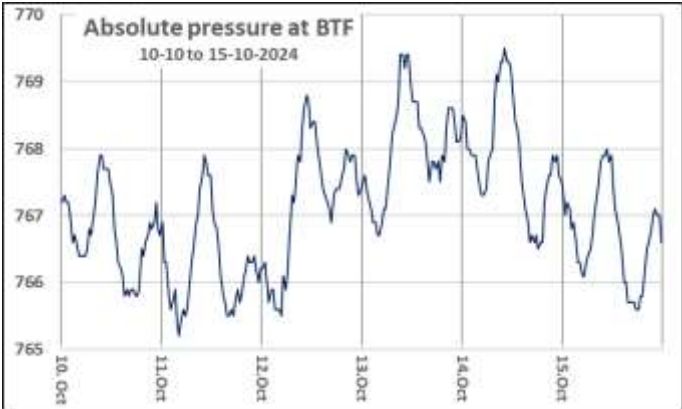
Air pressure in hectopascal (hpa) at Bhakanje Tea Factory – 29. september 2024 to 10. January 2025



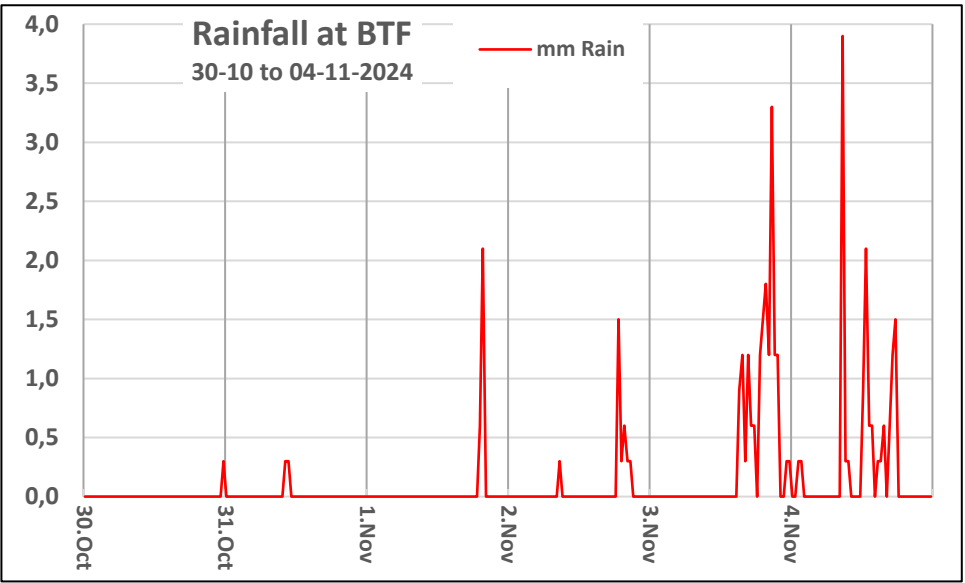
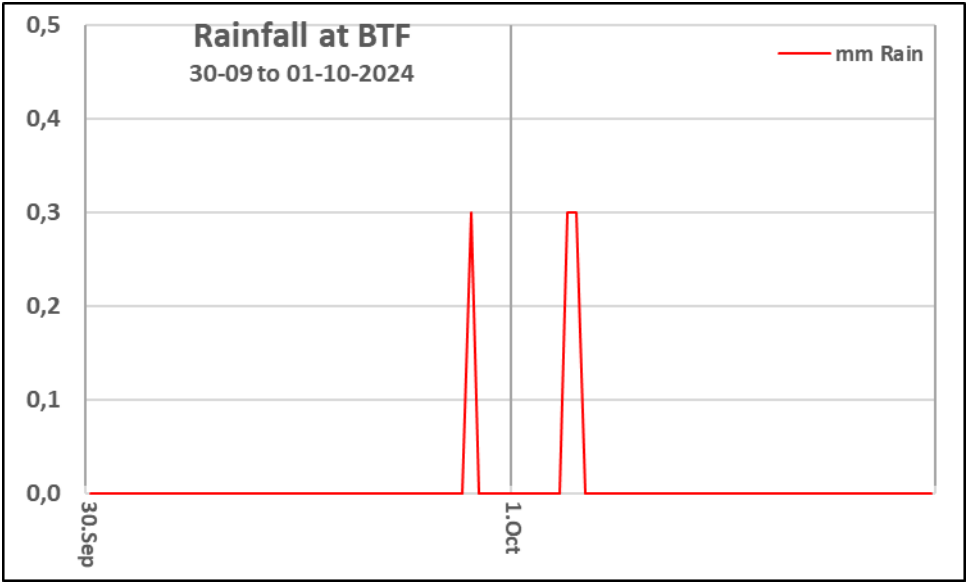
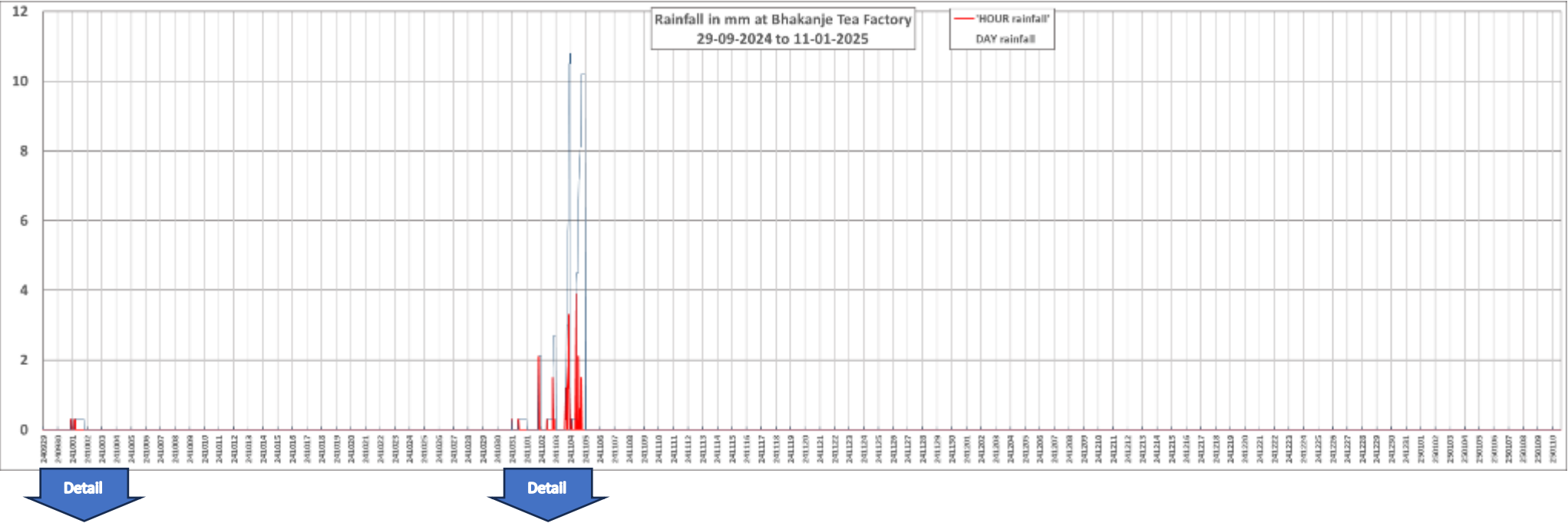
Detail

Detail

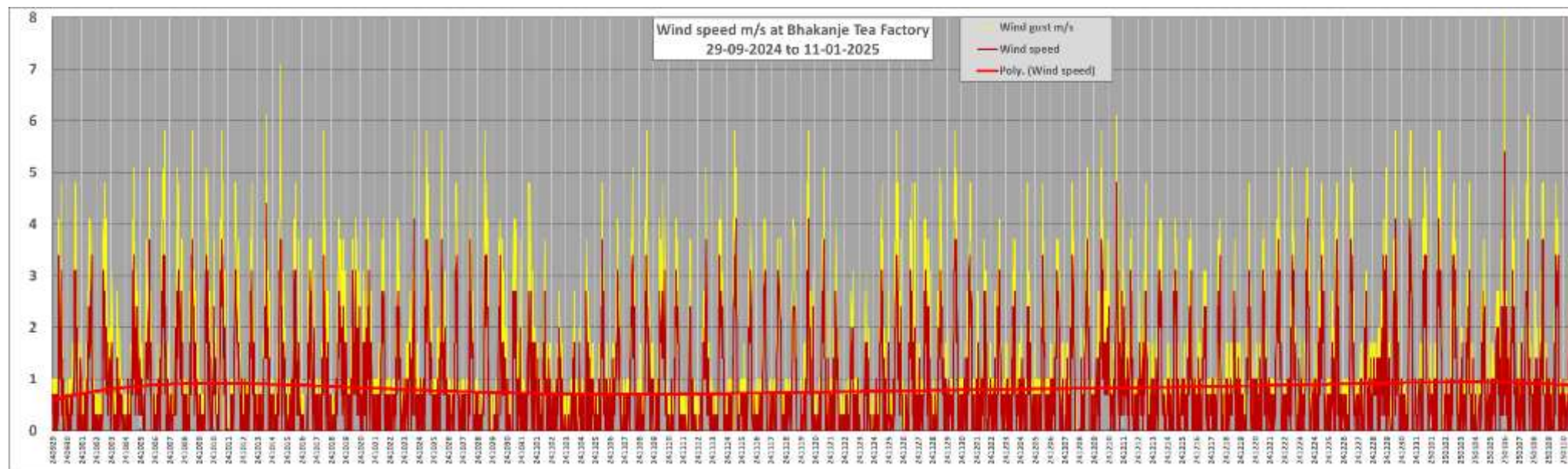
Detail



Rainfall in millimeter at Bhakanje Tea Factory – 29. september 2024 to 10. January 2025



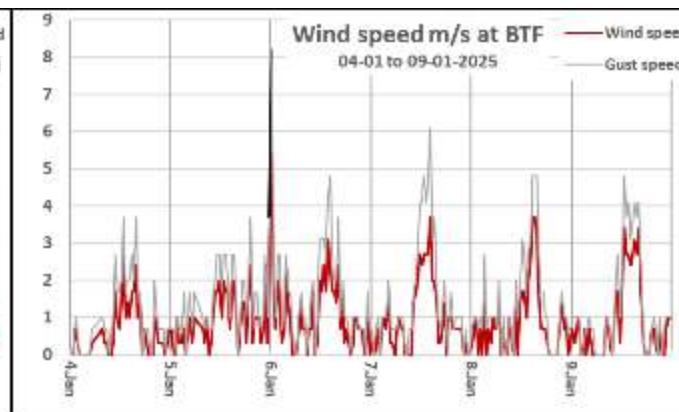
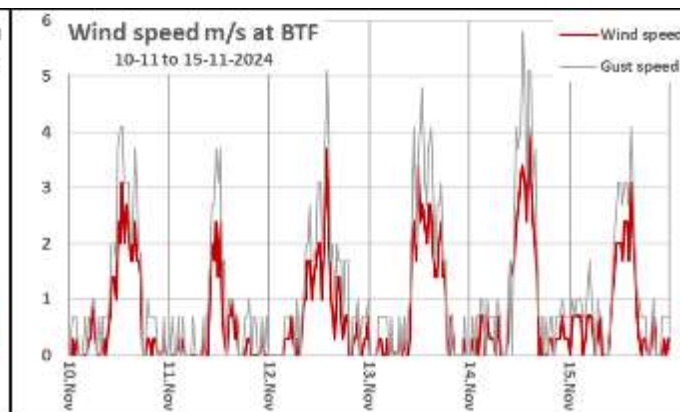
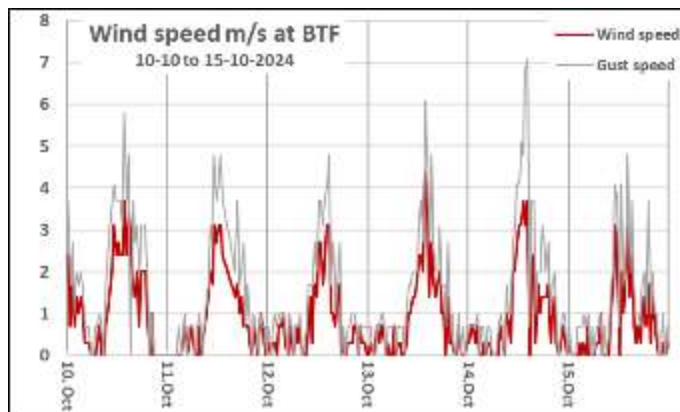
Wind speed, average and gust, meter/second, at Bhakanje Tea Factory – 29. september 2024 to 10. January 2025



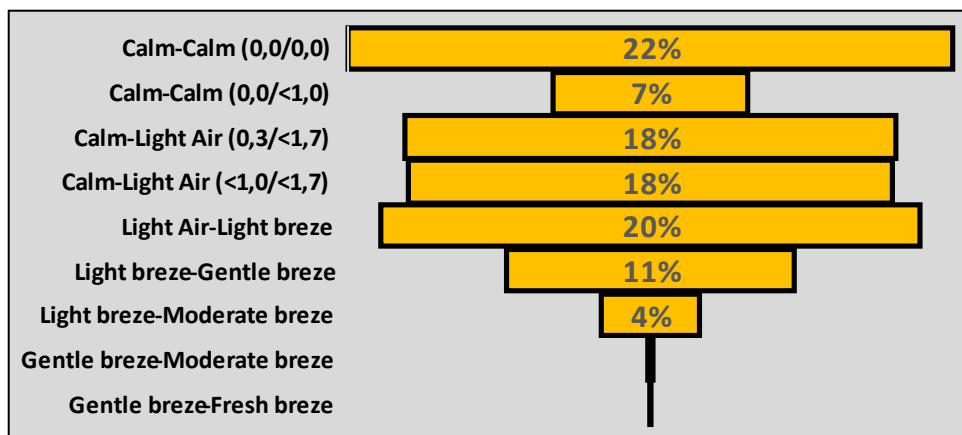
Detail

Detail

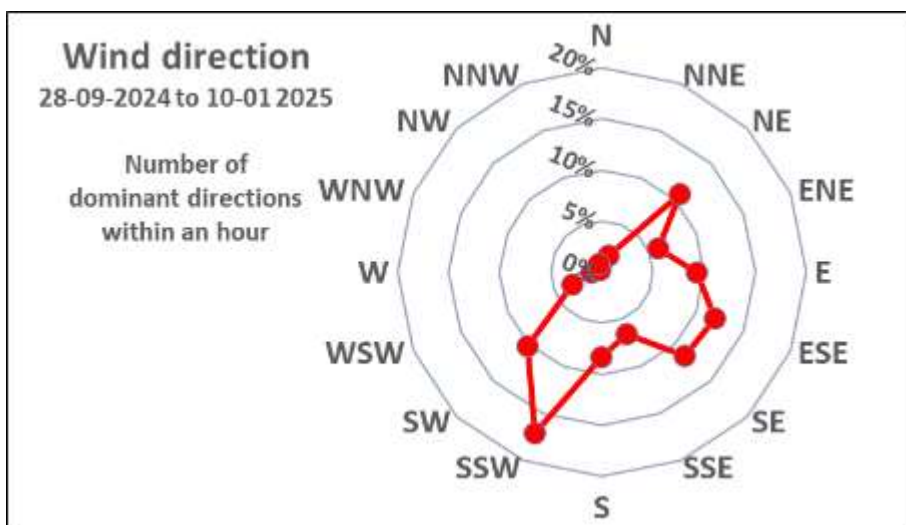
Detail



The average wind speed in the period is less than 1 meter/second which is **calm to light air**. During mid day the wind speed usually reaches 2,5 to 4 m/s which is **light to gentle breeze**. Only in gusts the wind reaches **moderate breeze**. Only one unusual occasion at midnight 6. January it reached **fresh breeze** level.



Wind direction at Bhakanje Tea Factory – 29. september 2024 to 10. January 2025



The wind speed is generally low at night raising during the day when the "valley wind" is raising due to the solar heating, always up the valley. Oppositely at night the cold air is floating down valley, but Bhakanje is not influenced by that due to the altitude 800 meter above the valley floor.

